



Tempe Streetcar

APTA Streetcar Subcommittee

2019 Mid-Year Meeting

February 27, 2019



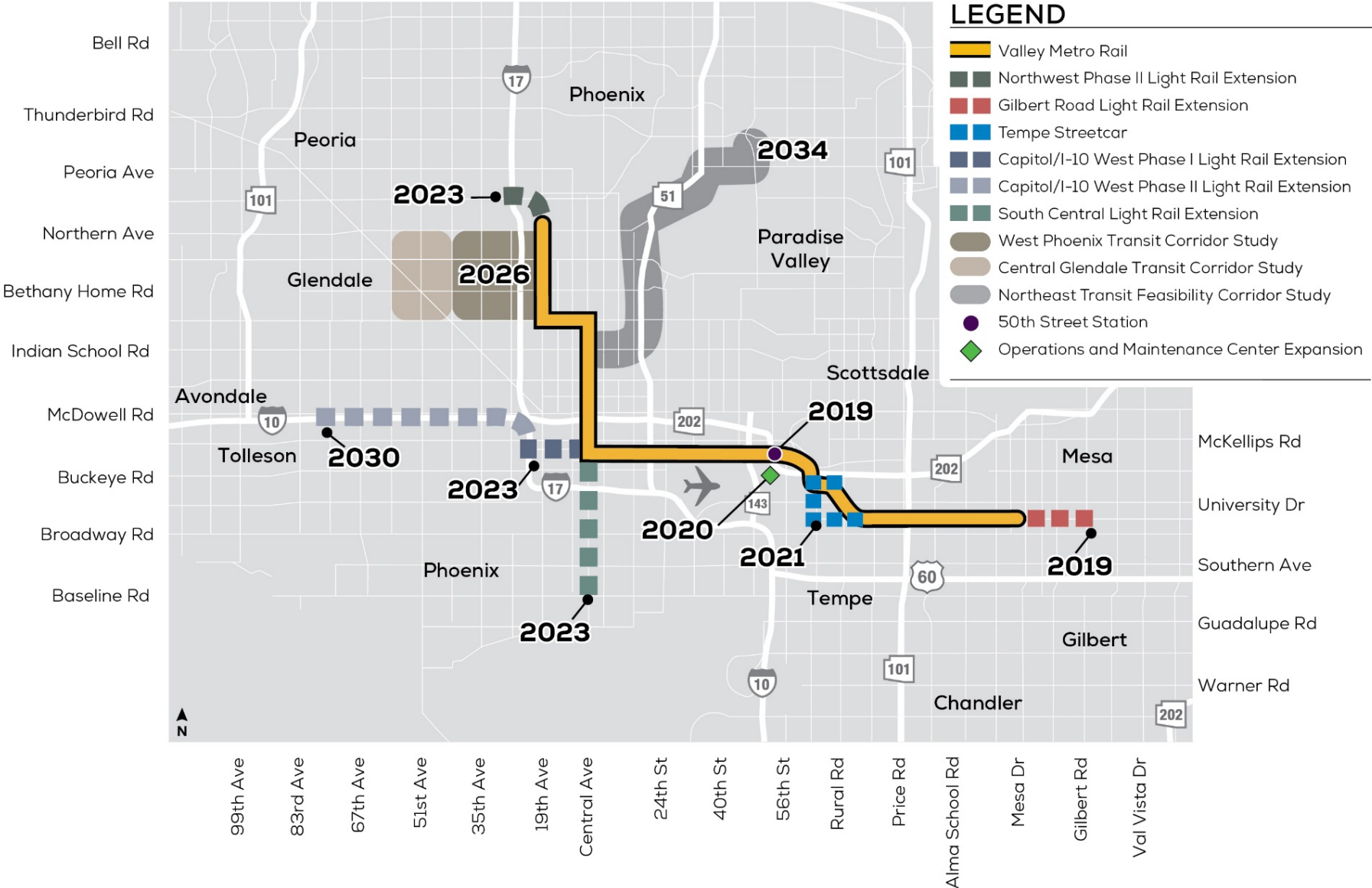
Outline



- Regional Rail System
- City of Tempe
- Overview/Project Features
- Design Challenges
- Schedule/Milestones
- Construction Challenges
- Financial Breakdown
- Streetcar Extension Study



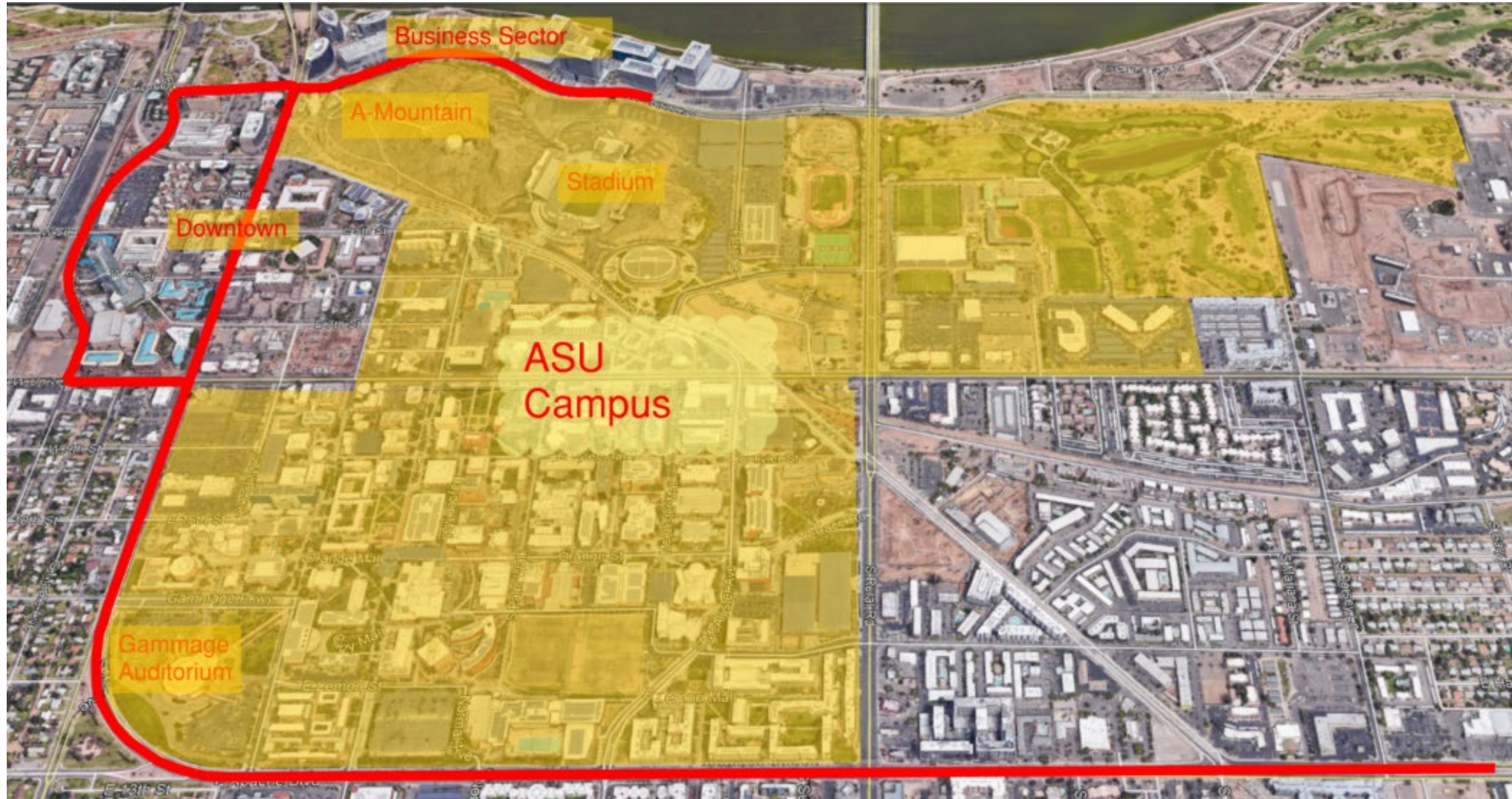
Regional Light Rail System



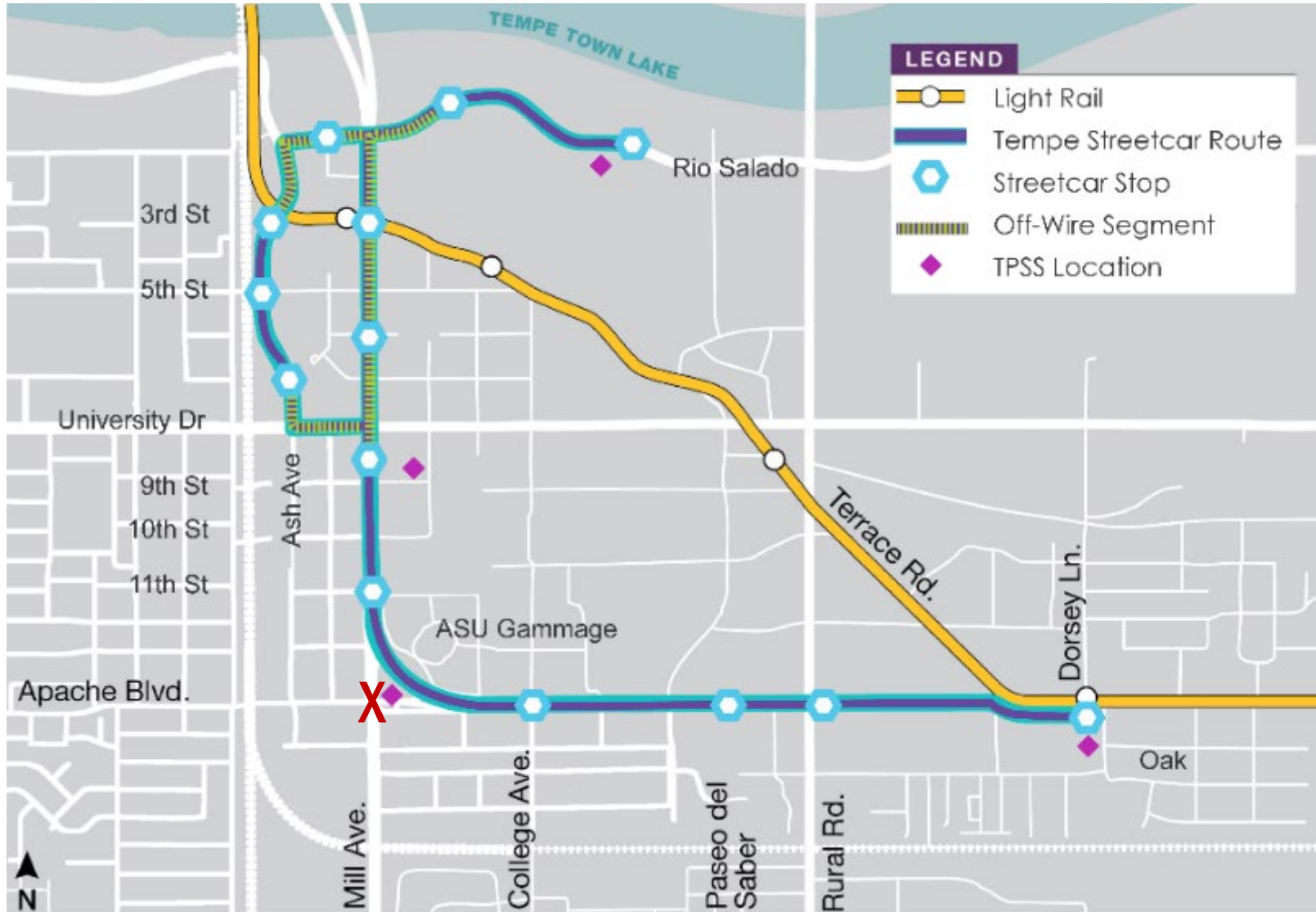
Tempe, AZ



Tempe, AZ

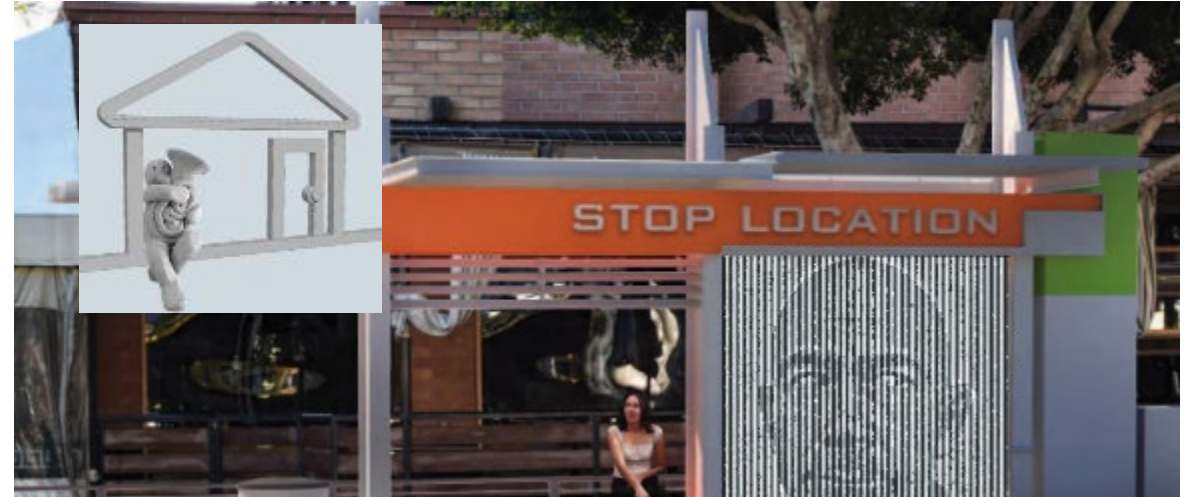
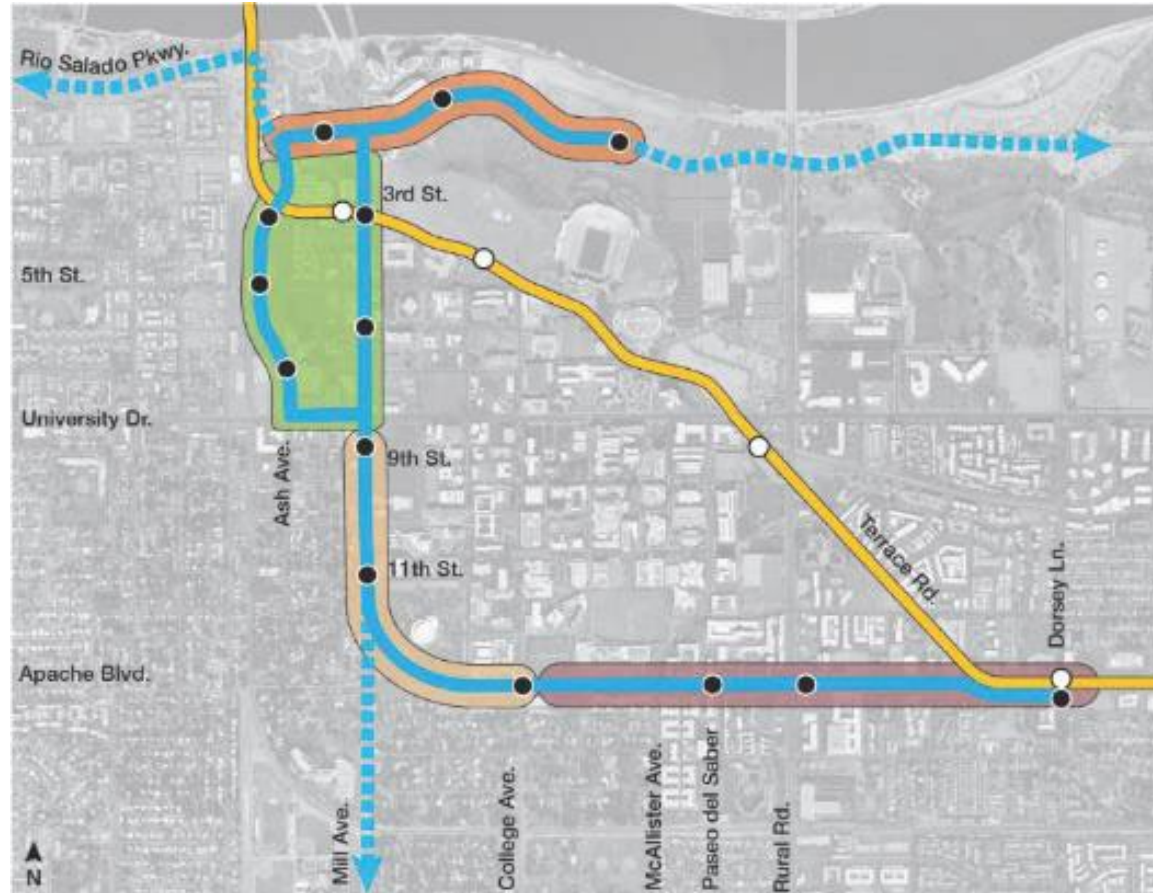


Overview



- Approximately 3 Miles
- 14 Stops
- 2 LRT Crossings
 - Ash Avenue
 - Mill Avenue
- 1 LRT Connection
 - Dorsey Lane
- 3 Traction Power Sub Stations (TPSS)

Public Art

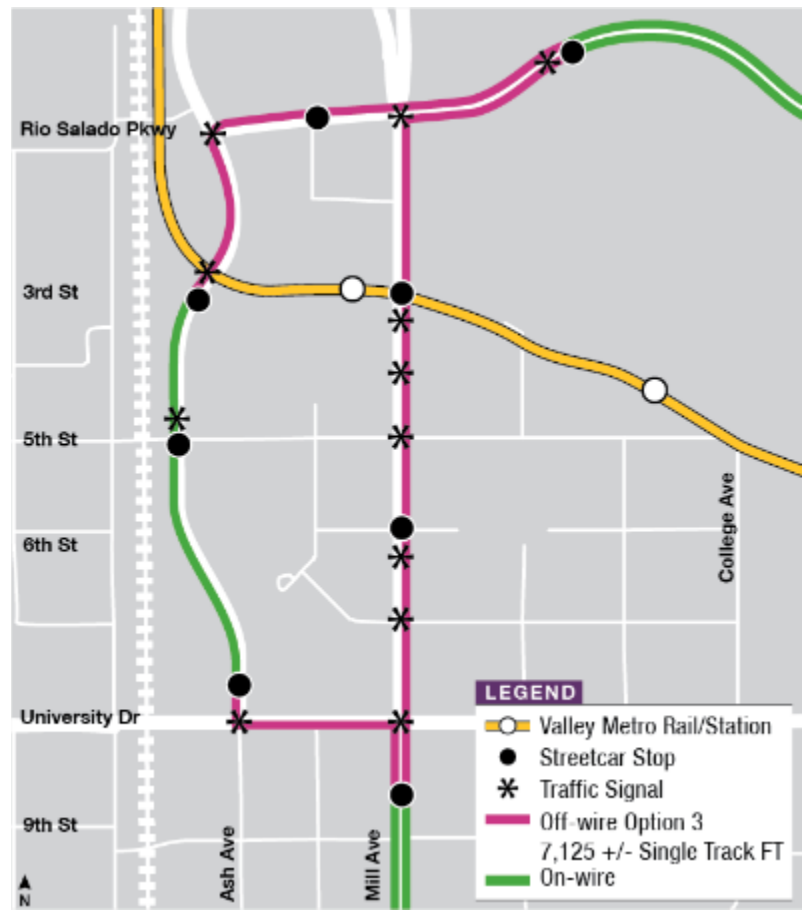


Route to OMC



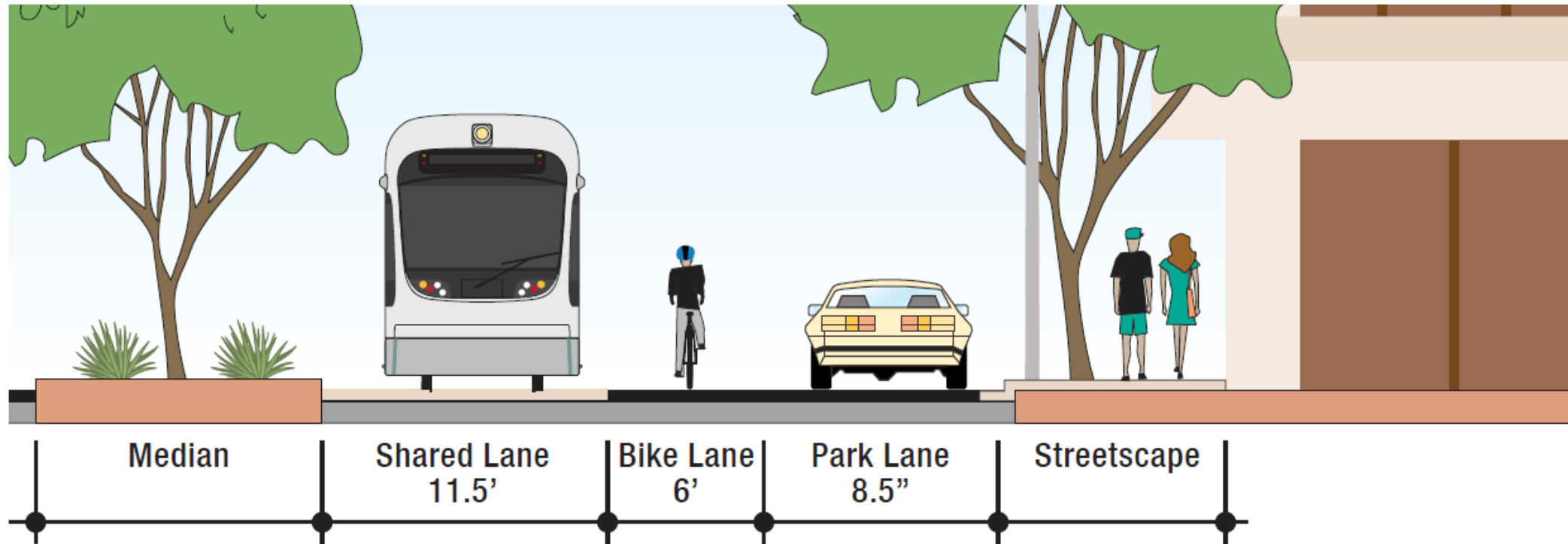


Streetcar Vehicle



Mill Avenue Configuration

Mill – University to Rio Salado





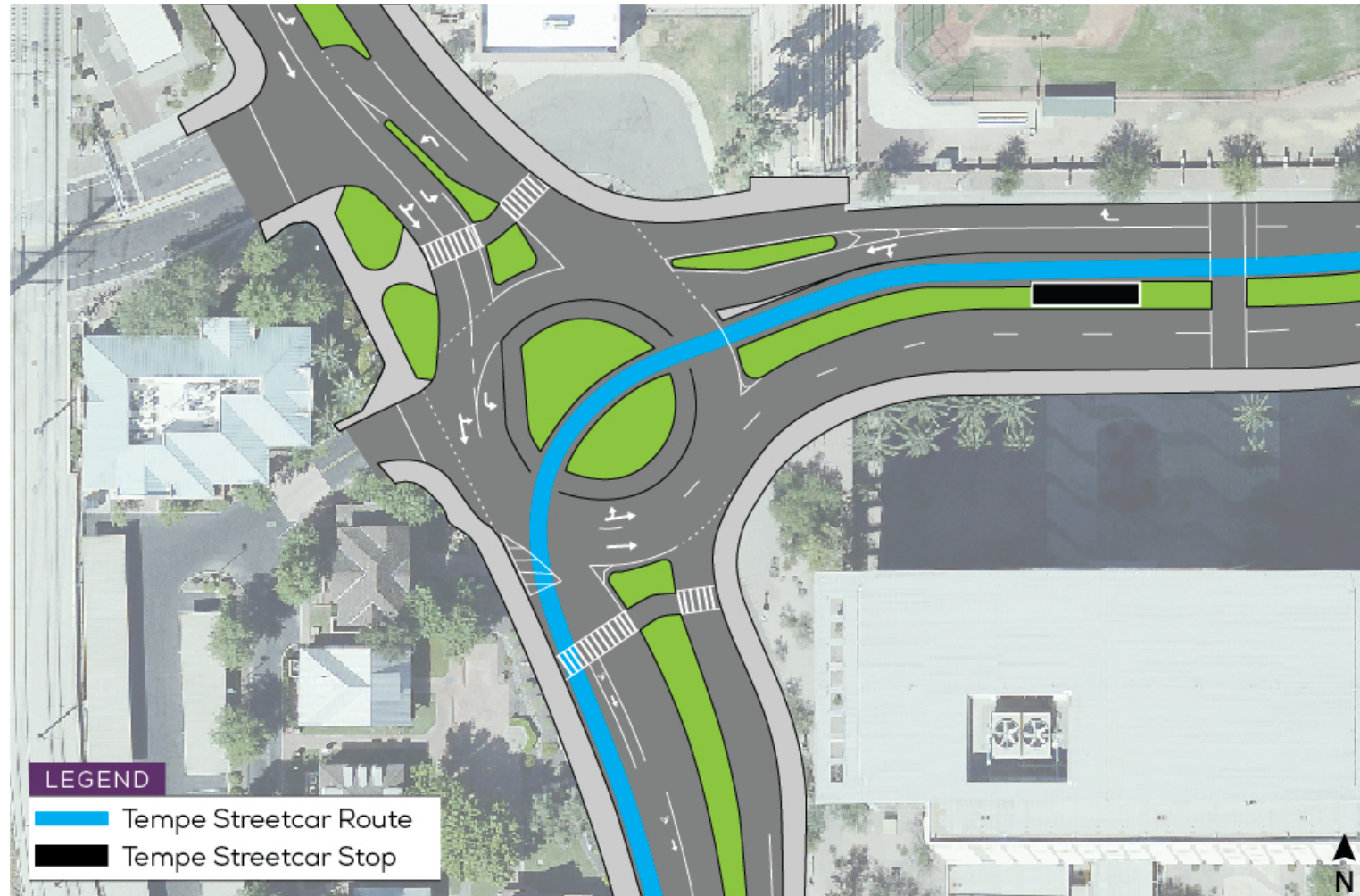
Design Challenges - Miscellaneous

- Utility Relocation Requirements
- # of TPSS
- Feeder Cables
- Landscaping
- Stops
- Alignment





Design Challenges - Roundabout





Design Challenges – Rio Salado





Construction Schedule

Construction Elements	2017				2018				2019				2020				2021			
Utility Relocation																				
Roadway Work																				
Track Guideway Installation																				
Stop Platforms																				
Electrical Systems Installation																				
Operations Training Vehicle & System Testing																				
Opening																				

- 14-year process: planning start - 2007



Tempe Streetcar Milestones

- Rail Delivery
- EE Approval
- ASU Agreement
- APS Agreement
- GMP Negotiations
- Risk Review
- **SYGA Approval**





Construction Challenges - LRT



Construction Challenges - Traffic



Traffic Control Challenges

- No surprises
- Capacity maintained during peak travel around the alignment dependent on caliber of work
- Restrictions limited to active work areas (traffic control will disperse when/where work is completed)
- Coordination with special events, adjacent construction, stakeholders, traffic engineering, Tempe PD







Tempe Streetcar Project Funding

Funding	Amount
Regional/Prop 400	\$95 M
FTA Small Starts	\$75 M
Federal CMAQ	\$19 M
Tempe/Private	\$13 M
Total	\$202 M

Outreach & Business Assistance

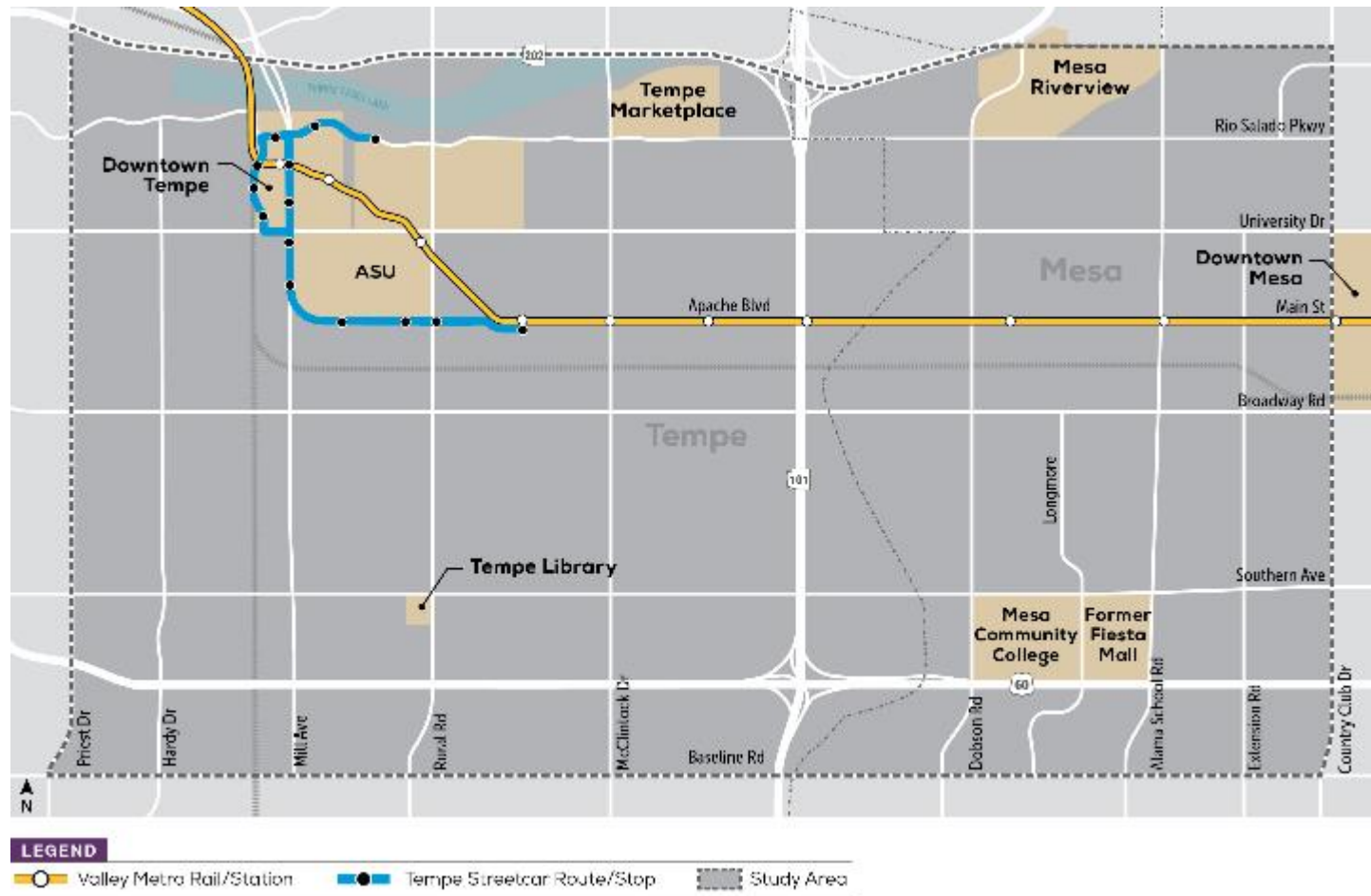




Coordinating with Others



Streetcar Extension Study



- Partnership with Valley Metro, Tempe & Mesa
- Investigate and identify high-capacity rail corridors
- Expand on potential extensions identified in 2014

Next Steps

- SYGA Approval
- Continue Track Installation (2,600' out of 28,000' to date)
- Finish utility relocations, including 3rd Party
- First Summer Downtown
- Vehicle Delivery April 2020
- Substantial Completion November 2020
- Open 2021

Thank You!



Dan Cleavenger, P.E.
Deputy Director, Corridor Development
Valley Metro
602.495.8244
dcleavenger@valleymetro.org